

VANITY FAIR

HOLLYWOOD 2016

ON TRAVEL

*"Luxury lies not in richness and ornateness
but in the absence of vulgarity"*
—COCO CHANEL



INDIA

the princely pavilions of

RAJASTHAN

By VICTORIA MATHER

ETHIOPIA

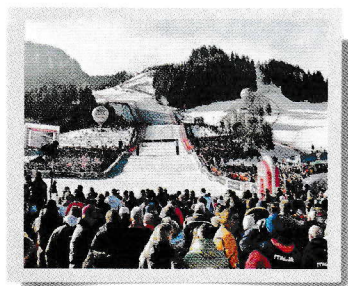
Praises sing to its miraculous

ROCK CHURCHES

By AIDAN HARTLEY

THE NEW BLACK

Fancy yourself a whizz on the slopes? Pit yourself against these classic black runs—then toast your skills in some of our favourite mountain restaurants. By GABRIELLA LE BRETON



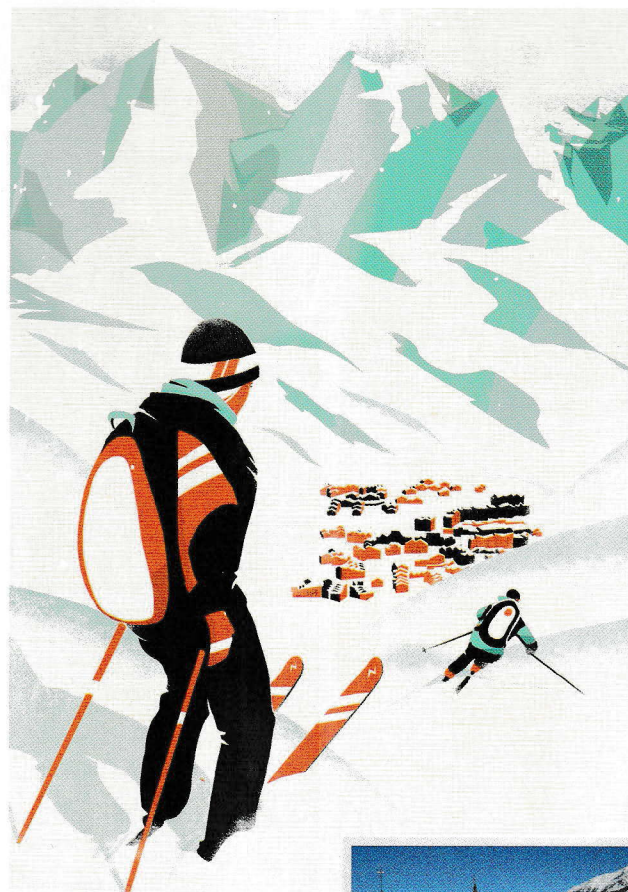
THE STREIF, KITZBUHEL, AUSTRIA

Locals have skied on the Hahnenkamm mountain since 1893. But when “Kitz” went global in the 1960s, it wasn’t for its cute medieval town or forgiving slopes, but for the world’s most feared downhill race track. The Streif became a fixture on the men’s World Cup tour in 1967; ski it and you’ll be following legends like Franz Klammer. You’ll have earned your Wienerschnitzel at the Hochkitzbühel restaurant, too. kitzbuehel.com; beitomschy.at



THE HIGHLAND BOWL, ASPEN HIGHLANDS, COLORADO, USA

Our clean-living cousins in the USA like to “earn their turns”, so even in the glamorous resort of Aspen you’ll find A-listers hauling their skis 40 minutes up the Highland Bowl to reap 2,500 vertical feet of powdery rewards. Regulars plummet down the Bowl at dizzying gradients, but you can find gentler slopes in the north-facing G-zones. Turns well and truly earned, ride the Deep Temerity chairlift back up for a cheese feast at Cloud Nine Bistro. The cosy timber chalet delivers authentic raclettes and fondues in true Euro-style. aspensnowmass.com



FORCELLA ROSSA, CORTINA D'AMPEZZO, ITALY

Set against the spires of the Dolomites, Cortina d'Ampezzo packs a hefty punch when it comes to scenery. One of Cortina's finest runs is Forcella Rossa, a women's World Cup piste. Weave through towering canyons, then burst into an open powder bowl beneath the cable car for maximum “look at me” exposure. Ride the cable car up to Rifugio Col Drusciè for restorative lobster tagliatelle before toasting the views with Ferrari sparkling wine. cortina.dolomiti.org



PISTE DU CHAMOIS, VAL D'ANNIVIERS, SWITZERLAND

Val d'Anniviers comprises 12 villages encircled by the “Imperial Crown” (five huge mountains, including the Matterhorn). Skiing between the valley's highest villages, Zinal and Grimentz, is relatively easy via the Piste du Chamois. Approach the steep entry to the 4.3km-long trail with caution but then let loose on the wide slopes, which bring you down to the Tsirouc forest. Two chairlifts from Grimentz take you to L'Etable du Marais, a farmhouse famed for its rösti potatoes smothered in ham, cheese, and onions, topped with a fried egg. valdanniviers.ch



BLACKCOMB GLACIER, WHISTLER BLACKCOMB, CANADA

Whistler Blackcomb's two highest lifts, linked by the world's highest lift, offer bountiful black and double-black-diamond runs. For a sense of splendid isolation, walk up to Blackcomb Glacier from the Showcase T-bar, bound down the bowl and zip through the glazed funnel at the glacier's base, then reward yourself with a gargantuan waffle smothered in maple syrup at the Crystal Hut at the top of the Glacier Express. whistlerblackcomb.com

LA VALLEE BLANCHE, CHAMONIX, FRANCE

Ascend 2,800m up from Chamonix to Mont Blanc's flank in the Aiguille du Midi cable car to emerge in a mystical landscape of snow gardens and glaciers. In the qualified hands of a mountain guide, shimmy down the (slightly hairy) *arête* before the stupendous 20km descent past towering icefalls, luminous turquoise glaciers and burbling rivers. Soak up the views at the Refuge Requin. chamonix.com



ILLUSTRATION: PIETARI POSTI; ©MÉDIALOUGE (CROWD WATCHING EVENT); JEREMY SWANSON (SKIERS LINED UP); IAN D'AGNALL/ALAMY (CORTINA D'AMPEZZO); ©SIBERIE-ANNIVIERS (CHALET, GRIMENTZ); TOURISM WHISTLER/MIKE CRANE (SKIER, WHISTLER BLACKCOMB); ©PATRIK LINDQVIST/CHAMONIX.COM (SKIER WALKING ALONG RIDGE)

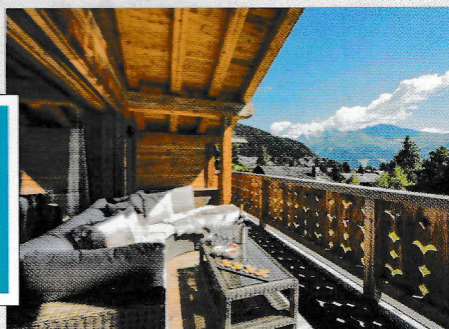
BLOSSOM HILL, LE PRAZ, FRANCE

Blossom Hill is every inch the ultra-chalet. Its impressive double-height sitting room, with full-length windows, makes the most of its Alpine setting in Le Praz. We love that the private cinema has a 10ft-wide screen, the fire-warmed Savoyard kitchen boasts a wine cellar, and the floor of the indoor/outdoor infinity pool can be raised to paddling-pool height, so it's safe for genuine water babies. You can ski right off the slopes into Blossom Hill's garden and the nearest lift is a two-minute ski-boot shuffle away. luxurychaletcollection.com



CHALET PELERIN, LE MIROIR, FRANCE

Perched above the hamlet of Le Miroir, Chalet Pelerin sleeps eight adults and four children. It has serious bells and whistles: a large outdoor hot tub lit by fire pits, an indoor salt-water pool, sauna and steam room, and large TV room. Best of all, however, is the dedicated ski room, packed with equipment, sunscreen, snacks and drinks (all complimentary). Everything's included, from ski guiding and children's cookery classes to fondue and fireworks. elevenexperience.com



THE BEST FAMILY SKI CHALETs

By GABRIELLA LE BRETON

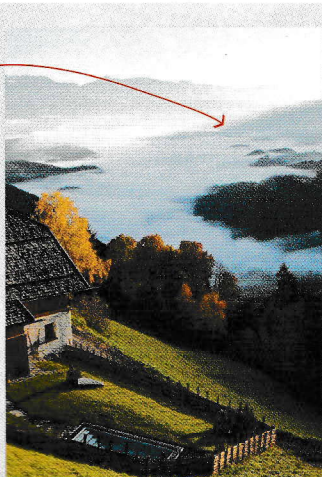
CHALET SHERWOOD, VERBIER, SWITZERLAND

Clad in caramel-hued timber and dressed with fur throws and reindeer pelts is the sophisticated new Chalet Sherwood. Sleeping 10, Sherwood is found in a secluded part of Verbier, where little ones need only step out of the ski room to be on the Les Moulins nursery slopes. There's a TV den for the kids, and the adults can sip cocktails by the open fire upstairs and plot how to put the 24-hour in-resort chauffeur service to best use. skiverbiereexclusive.com



SAN LORENZO MOUNTAIN LODGE, VAL PUSTERIA, ITALY

San Lorenzo Mountain Lodge has mesmerizing views over the Dolomites. Four bedrooms, with a spa, helipad, an eye-popping wine collection and the children's favourite: the "nest" bed built in atop the ceramic wood-burning stove. Owners Stefano and Giorgia Barbini are former fashion bigwigs, and have poured their exquisite taste into the property. Stefano guides guests around the family-friendly slopes of nearby Kronplatz. sanlorenzolodges.com



GRANDE CORNICHE, LES GETS, FRANCE

Grande Corniche resembles every child's dream chalet: hewn from timber, its sloping eaves are laden with snow and illuminated by tiny lights. Step inside to discover a masterful blend of traditional and contemporary. Boot warmers and the chauffeur service will get you up in the morning following late nights spent playing snooker, lounging round the grand piano or stargazing in the outdoor jacuzzi. consensiochalets.co.uk

CHALET UBERHAUS, LECH, AUSTRIA

Slotted into the manicured ski slopes of Oberlech, a plush enclave above the European aristocracy's beloved resort of Lech, überHaus is suitably "uber". More mini-hotel than chalet, it has ski-in/ski-out access, uninterrupted mountain views, three large suites, two en-suite double bedrooms and a dreamy children's bunkroom. On top of that comes an impressive spa, a gym, superslick private cinema, snooker room, bar and library. hautemontagne.com